

Key Features and Benefits

+ Stage Level PTA

Evaluate reservoir characteristics and productivity of each hydraulically fractured stage in real-time during completion.

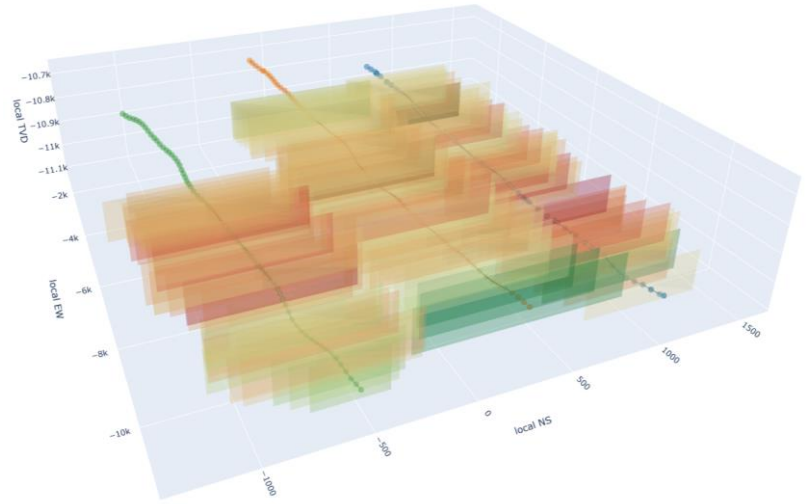
+ Automated Analysis

Reduce time to decision making for optimized completion design iterations with automated QC processes and analysis immediately following pressure fall-off data acquisition.

+ Interactive 3D Viewing Platform

Visualize well, pad and field level reservoir characterizations, including half-lengths and producing surface area with an interactive online three-dimensional viewing platform

ResBRAIN®



ResBRAIN 3D Viewing Platform

ResBRAIN® Deliverables

Required Fall Off Time (hrs) **0.5** **3 - 10**

Fracture Half Length (xf)	✓	-
Fracturing Fluid Efficiency	✓	-
Effective ISIP	✓	-
Reservoir Permeability (k)	✓	-
Producing Surface Area (PSA)	✓	-
Propped Closure Pressure	-	✓
Unropped Closure Pressure	-	✓
Propped Surface Area	-	✓

Product Overview

ResBRAIN® is a Post Frac Pressure Decay (PFPD) analysis tool and three-dimensional viewing platform for stage-level reservoir characterization. This automated system performs real-time quality control and data validation, delivering results immediately post-stimulation. Leveraging advanced reservoir engineering methodologies, ResBRAIN® determines the half-length and productivity of each hydraulically fractured stage. Multi-case sensitivity analysis capabilities further enhance understanding of changing subsurface conditions, providing critical insights to accelerate data-driven decision-making processes, optimize well performance, and maximize resource recovery.

Balancing Operational Efficiency with Fracture Effectiveness

For More Information:

Web
www.ShearFRAC.com

Phone
1-888-544-1526

Email
info@ShearFRAC.com